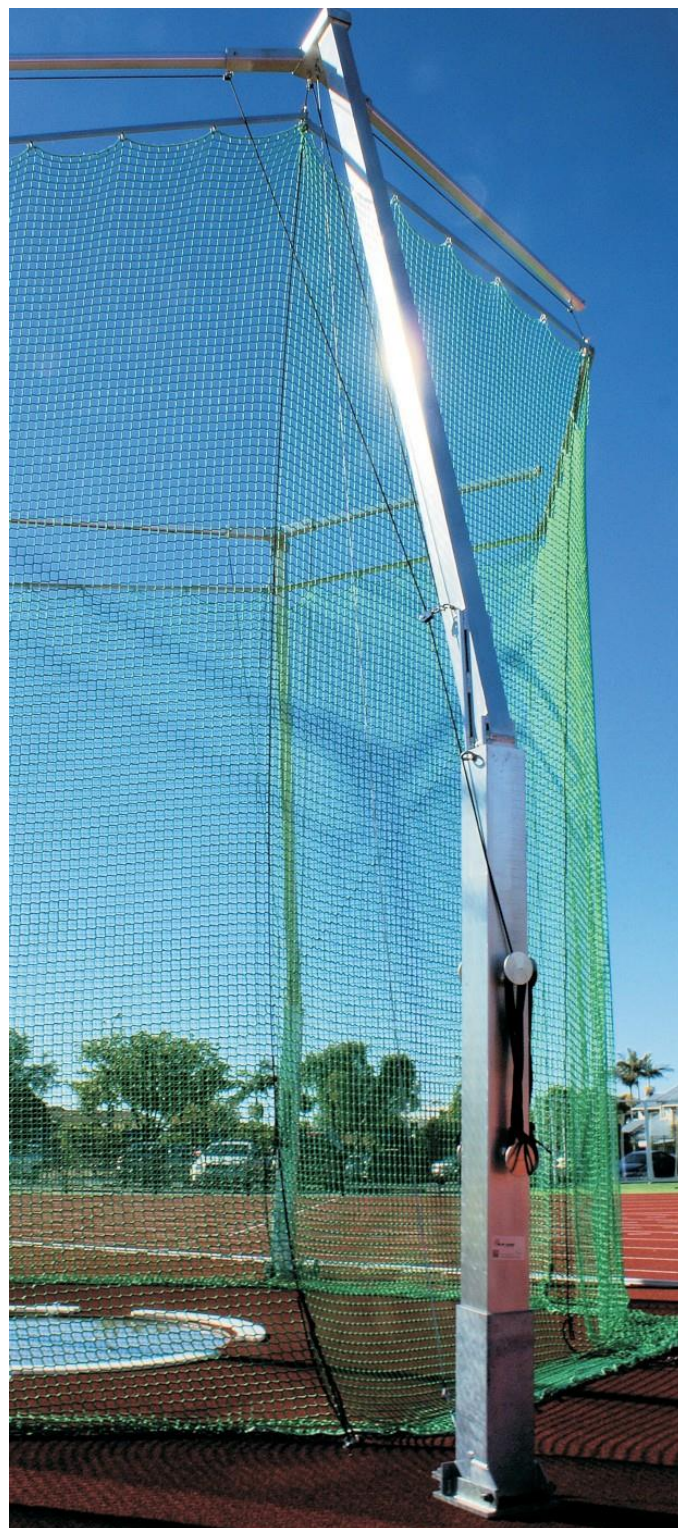


OPERATING AND MAINTENANCE

THOR 10 HAMMER THROW CAGE

CONTENTS:

FLOOR PLAN
FOOTING SIZE
NET SIZE
COMPONENTS LIST
OPERATING
MAINTENANCE
WARRANTY





Thor 10 hammer throw cage is an IAAF certified (E-05-0403) cage and the largest of two hammer cages certified for competition use by IAAF.

The cage has a Cyclone 2(117kph) wind rating with the net erected.

The 2.0m x 10.0m gates are hinged 7.0m from the centre of the single circle with perimeter netting 7.0m high.

Four aluminium net support poles hinged on steel spigots allow the poles to be assembled laying down and raised by a winch mounted on a stand. The poles and spigots can be removed leaving flush ground sleeves with caps.

The net is attached to rails which connect to pole ropes for raising. The ropes are tied off to cleats on each pole.

Net retaining ropes from the poles are fed through the net and tied to saddle anchors set into footings.

Gates are operated by releasing a latch on each pole and swinging the arm to the appropriate position and tying off the ground anchor.

The cage can be raised and lowered with a winch on a stand which attaches to ground anchors.

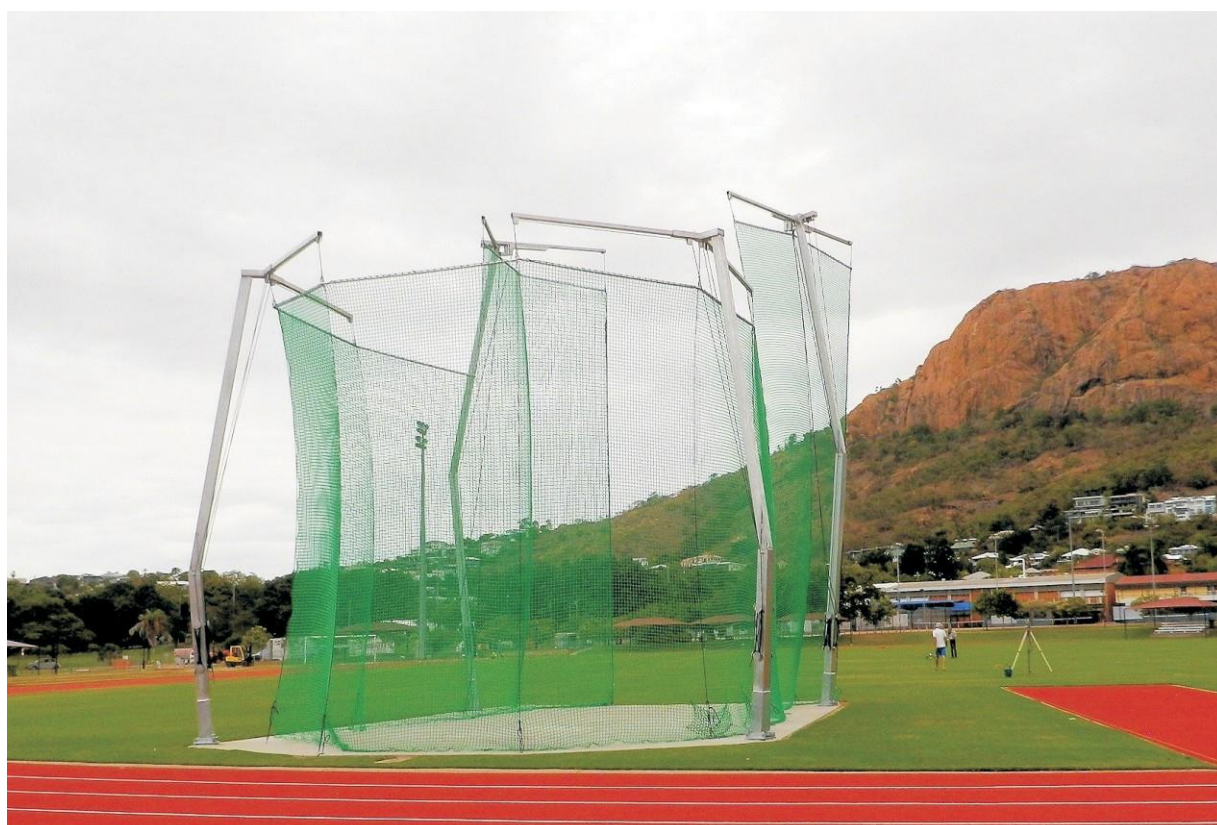


PLAY HARD
sports equipment

24 Ern Harley Drive Burleigh Heads Qld. Australia 4220
Ph: 1300 851 518 | Ph 61 7 5593 4494 | Fx: 61 7 5593 4338
email@playhardsports.com.au www.playhardsports.com.au

SPECIFICATION COMPARISON CHART

Description	Technical Data		
	Thor 10 Hammer Cage	Thor 9 Hammer Cage	Apollo Discus Cage
Size	10m x 2m gates, 7 metre perimeter.	9m x 3.2m gates, 7 metre perimeter.	5.5 metre high net.
Compliance standard	IAAF certified. E-05-0403	IAAF certified. E-15- 0822	IAAF certified. E-12-0695
Intellectual Property	Patent Application	Patent Application	Patent Application
Application	Hammer and Discus, Concentric	Hammer and Discus, Concentric	Discus
Gate pivot distance	7.0m from circle centre.	4.2m from circle centre.	7.0m from circle centre.
Gate edge	Rope and steel cable.	Rope and steel cable.	Rope.
Gate operation	Swing arm, ground anchor hook.	Swing arm, ground anchor hook.	N/A
No. of poles	4	3	3
Pole hardware	Rope cleats and pulleys.	Rope cleats and pulleys.	Rope cleats.
Pole material	Steel and aluminium.	Steel and aluminium.	Steel and aluminium.
Ground work	4 sleeves, 14 rope anchors	3 sleeves, 14 rope anchors	3 sleeves, 8 rope anchors
Finish	Galvanised and mill finish.	Galvanised and mill finish.	Galvanised and mill finish.
Net	44mm square mesh, 5mm woven poly, UV stable, IAAF certified.	44mm square mesh, 5mm woven poly, UV stable, IAAF certified.	44mm square mesh, 2.5mm woven poly, UV stable, IAAF certified.
Net support	Net rails all round.	Net rails all round.	Net rails and free hang.
Net retaining ropes	10	8	6
Ropes	8mm black woven polypropylene.	8mm black woven polypropylene.	8mm black woven polypropylene.
Wind rating	Hurricane 1 / Cyclone 2	Hurricane 1 / Cyclone 2	Cyclone 1 (62mph/100kph).
Assembly method	Raised by winch.	Raised by winch.	Raised by hand.
Manpower	2-3 people	2-3 people	2-3 people
Assembly time	6-7 hours	5-6 hours	2.5 hours

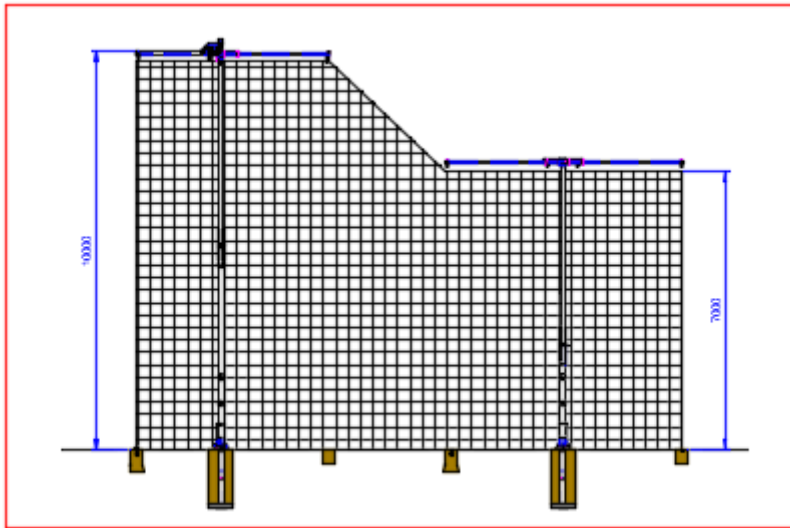


Thor 10 Hammer Cage
North Queensland Athletics Townsville

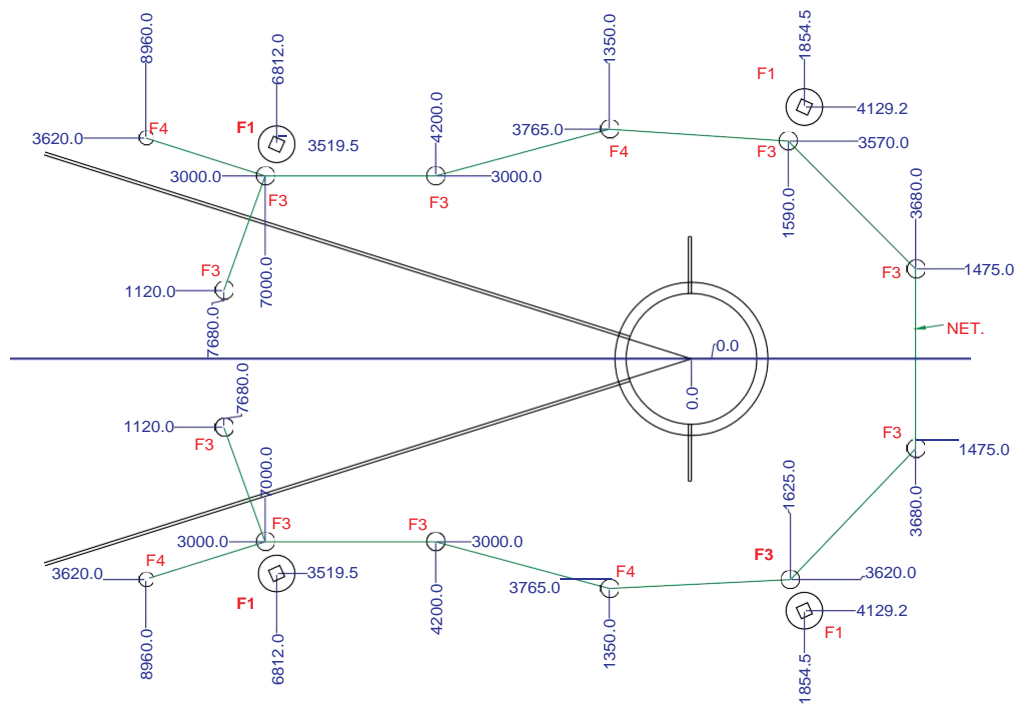


PLAY HARD
sports equipment

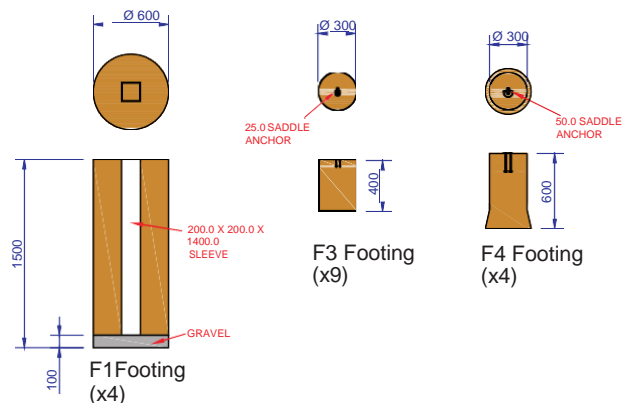
24 Ern Harley Drive Burleigh Heads Qld. Australia 4220
Ph: 1300 851 518 | Ph 61 7 5593 4494 | Fx: 61 7 5593 4338
email@playhardsports.com.au www.playhardsports.com.au



Gates 10.0m high x 2.0m wide
Perimeter net 7.0m high

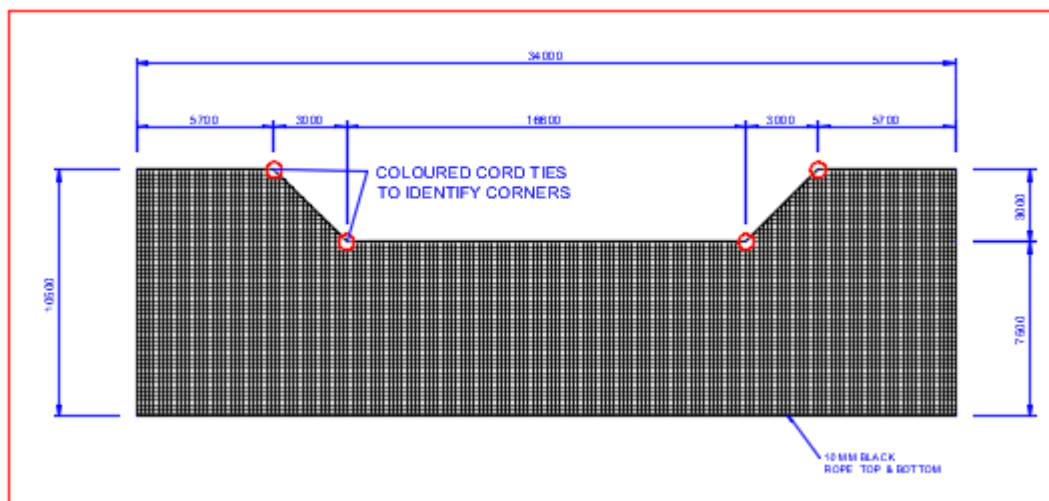


Footing position in relation to the centre of the circle.
The green line shows the net position including the open and closed gate positions.



PLAY HARD
sports equipment

24 Ern Harley Drive Burleigh Heads Qld. Australia 4220
Ph: 1300 851 518 | Ph 61 7 5593 4494 | Fx: 61 7 5593 4338
email@playhardsports.com.au www.playhardsports.com.au



THOR - 10 HAMMER CAGE NET

NET SPECIFICATION:

5 MM BRAIDED CORD BLACK
 44MM SQUARE MESH
 (MESH TO HANG SQUARE, NOT DIAMOND)
 MIN 300KG BREAKING LOAD
 IAAF STANDARD.

The net size allows for covering 10.0m high gates and 7.0m perimeter with excess at ground level.

The square hung nut is 10% longer than the required coverage to allow for sideways pull. The net should be hung to allow 2.4m of net contained in the 2.0m gate, 3.3m of net in the 2.8m adjoining panel and the 22.6m of 7.25m net evenly spaced through the seven perimeter net rails.

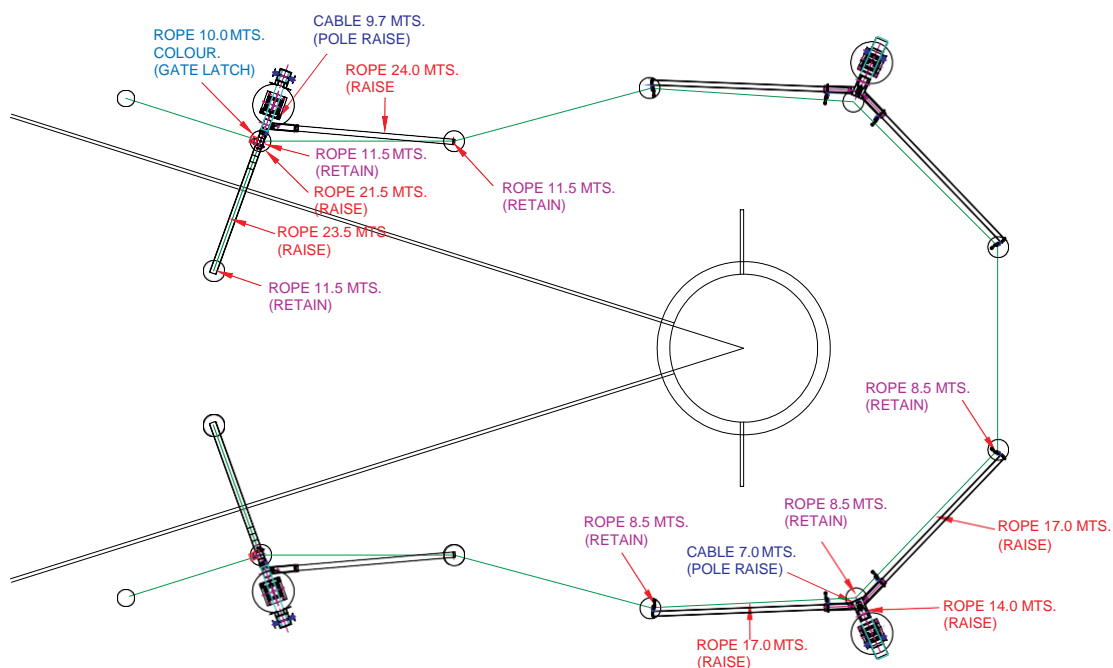


The net is evenly spaced and attached to hooks on the net rails.



Net rails are raised by rope and tied off the cleats.

ROPE AND CABLE LOCATION



ROPE AND CABLE LIST

QTY	ITEM	USE
2	BLUE GATE RELEASE (1 EYE) 10.0 MTS. 20.0 MTS	ROPE
2	LONG GATE RAISE 23.5 MTS. 47.0 MTS.	ROPE
2	SHORT GATE RAISE 21.5 MTS. 43.0 MTS.	ROPE
2	10.0 M PANEL RAISE 24.0 MTS. 48.0 MTS.	ROPE
4	REAR EXTENSION RAISE 17.0 MTS. 68.0 MTS.	ROPE
2	REAR POLE CENTER RAISE 14.0 MTS. 28.0 MTS.	ROPE
6	8.0 MM DINEMA NET RETAINING 11.5 MTS 69.0 MTS.	ROPE
6	8.0 MM DINEMA NET RETAINING 8.5 MTS. 51.0 MTS.	ROPE
26	8.0 MM BRASS ROPE SWAGES	ROPE
26	S 234 8 MM 316 WIRE ROPE THIMBLE	ROPE
TOTAL	BLACK 8.0 MM DINEMA - 120.0 MTS.	ROPE
TOTAL	BLAKC 8.0 MM DINEMA BRAID - 234.0 MTS.	ROPE
TOTAL	BLUE 8.0 MM DINEMA BRAID - 20.0 MTS.	ROPE
2	6.0 MM STAINLESS STELL WIRE CABLE GATE POLE 9.7 MTS. 19.4 MTS.	ROPE
2	6.0 MM STAINLESS STELL WIRE CABLE BACK POLE 7.0 MTS. 14.0 MTS.	ROPE
8	M-6 COPPER CRIMP	ROPE
8	S 234 6.0 MM 316 WIRE ROPE THIMBLE	ROPE
1	SEE NET SPECIFICATION 34000.0 X 10250.0	NET

ASSEMBLY



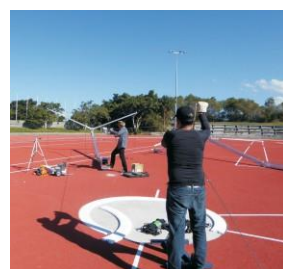
The hinged base plate inserts into the ground sleeve.



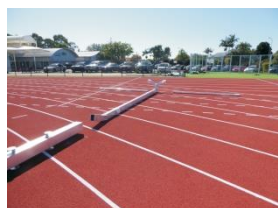
A cable is attached to the top of each pole and shackled to the winch. The winch is anchored to one of the F4 type footings.



A steel spigot bolts on to the hinged base plate. The pole inserts into the spigot.



The poles are hinged to raise plates and raised by the winch. Spacers are placed between the base plate and spigot to adjust the forward or backward lean of the pole.



Poles are assembled on the ground and ropes fed through the rollers.



The net is attached to hooks on net rails. The rails are shackled to the raising ropes. A net retaining rope is also attached and is fed through the net as it is raised.



Poles consist of an upper and lower section with arms or gates protruding from the upper section.



The net is raised in stages. Net retaining ropes are also attached to the net rails and are fed through the net as it is raised.

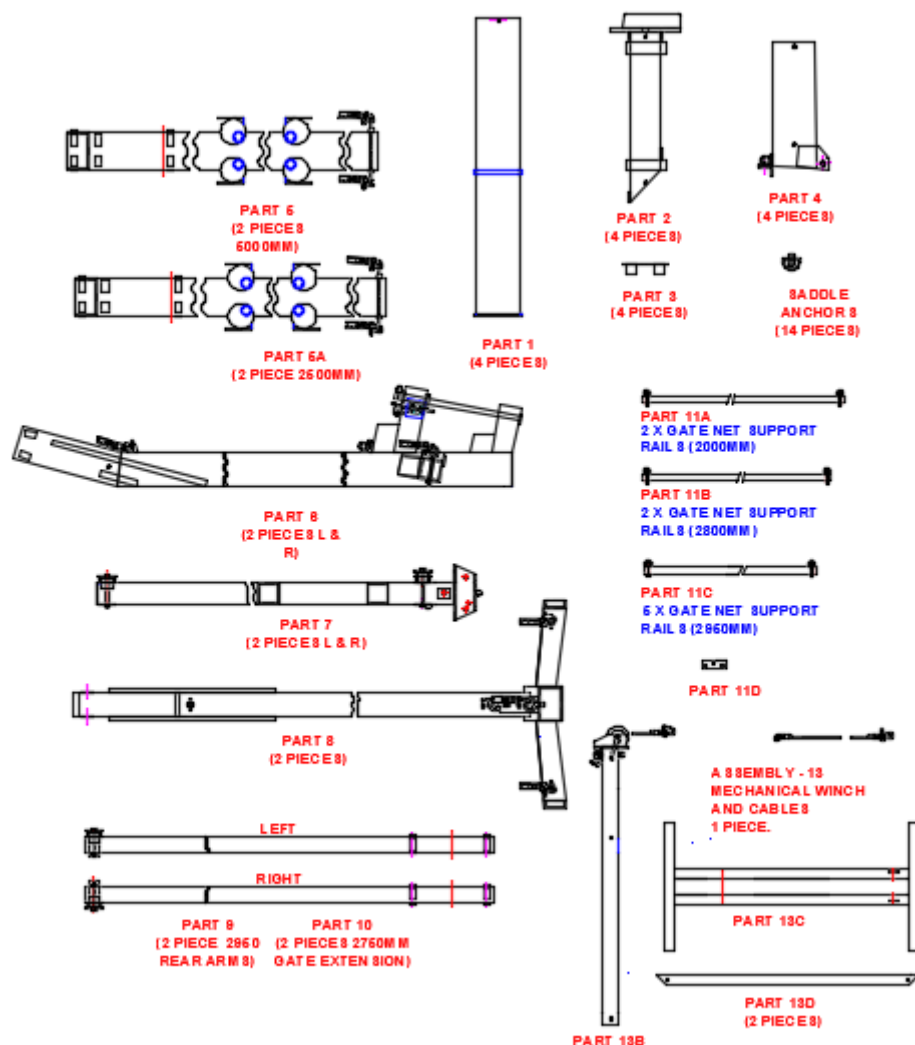


Arms slide into sockets and are bolted in place. Ropes are fed through before the pole is raised.



Ropes are tied off the cleats on the side of the poles. The cleats are designed to avoid the net entanglement.

PARTS LIST



PLAY HARD
sports equipment

24 Ern Harley Drive Burleigh Heads Qld. Australia 4220
Ph: 1300 851 518 | Ph 61 7 5593 4494 | Fx: 61 7 5593 4338
email@playhardsports.com.au www.playhardsports.com.au



Thor 10 Hammer Cage - Super Sports Centre, Gold Coast

OPERATION:

The cage is quick and easy to operate. The gates are adjusted by pulling the coloured rope on each gate pole which releases a latch holding the gate. Unclip the net at the ground anchor, swing the gate by pulling the net to either the open or closed position. The gate will relocate into the latch. Clip the net into the new position. For right hand throwers, open the right gate (viewed from the throwing circle) and close the left gate. For left hand throwers, open the left gate and close the right gate.

MAINTENANCE:

The net retaining ropes should be tensioned at all times. This restricts the net from blowing.
Do not tie the net back to the poles.
Do not tie the gate net back to increase the opening.
Do not climb on the net or the poles.
Make sure the gates are set in the correct position.
Lower the net if winds are expected to exceed 100kph.
Spectators should remain well clear of the net when the cage is in use.

WARRANTY:

The standard Play Hard Sports product warranty terms and conditions apply.
The metal components of the product has a 5 year warranty against defective materials and workmanship. The net and ropes are not covered in the warranty. The life span of the net and ropes are subject to weather conditions, the amount of use and misuse.
Full warranty terms and conditions are available in the standard product price list.



PLAY HARD
sports equipment

24 Ern Harley Drive Burleigh Heads Qld. Australia 4220
Ph: 1300 851 518 | Ph 61 7 5593 4494 | Fx: 61 7 5593 4338
email@playhardsports.com.au www.playhardsports.com.au